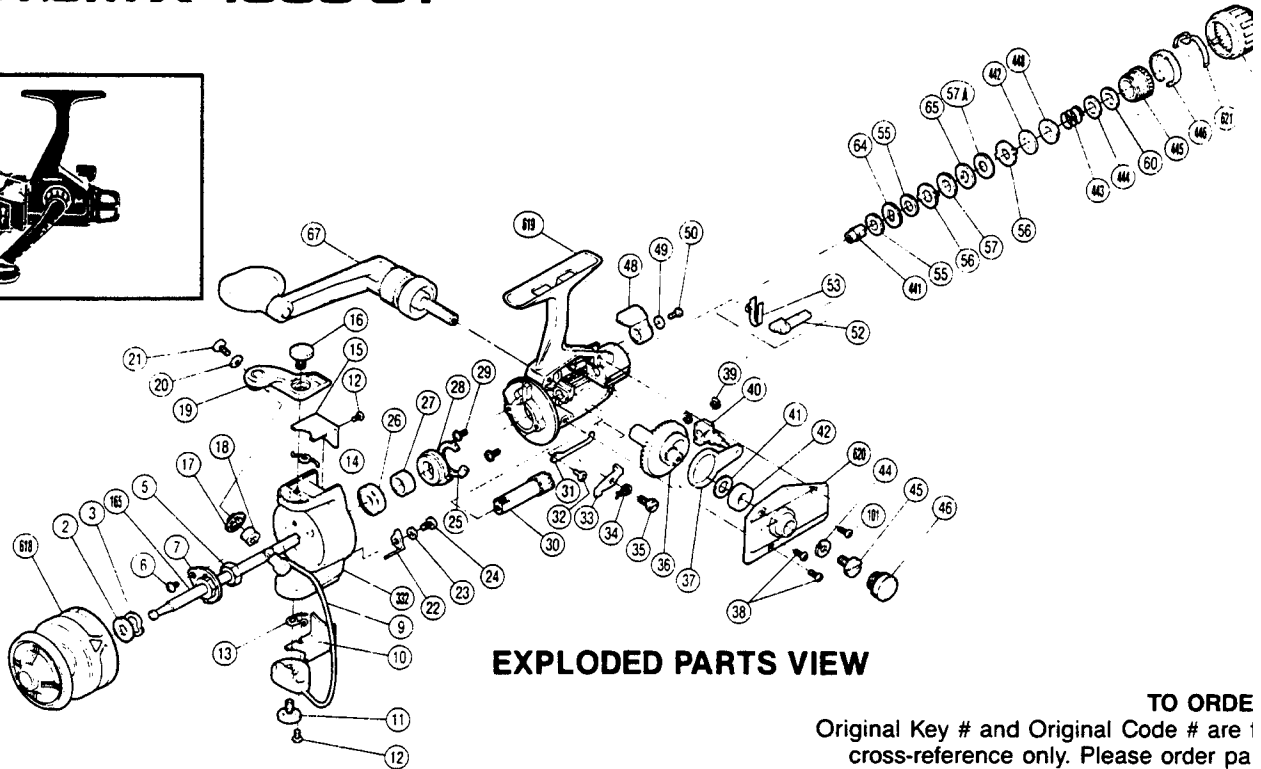
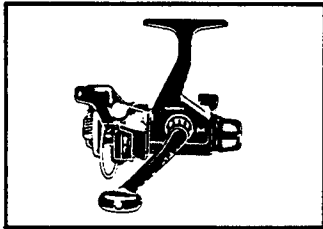


SHIMANO®

CUSTOM X-1000 GT



EXPLODED PARTS VIEW

TO ORDER

Original Key # and Original Code # are 1 cross-reference only. Please order pa using the Part # column and the prefix "R" which indicates the Rear Drag reel serie

PARTS LIST

PART #	ORIGINAL KEY #	ORIGINAL CODE #	DESCRIPTION	PART #	ORIGINAL KEY #	ORIGINAL CODE #	DESCRIPTION
618.	1.	6-0209 31201S	Spool Assembly	36.	37.	7-0408 26100S	Drive Gear
2.	2.	7-0217 26100S	Spool Washer	37.	38.	7-0410 26100S	Oscillating Arm
3.	3.	7-2101 06100S	Tension Spring	38.	39.	7-0011 30300S	Side Cover Screw A
6.	4.	7-0013 30410S	Nut Lock Screw	39.	40.	7-0525 26100S	"C" Lock
165.	5.	6-0219 27100S	Main Shaft Assembly	40.	41.	7-0472 26100S	Oscillating Block
7.	6.	7-0360 21000S	Rotor Nut Lock Plate	41.	42.	7-0446 01100S	Drive Gear Washer
5.	7.	7-0311 26100S	Rotor Nut	42.	43.	7-0617 26100S	Drive Gear Bushing
17.	8.	7-0423 21000S	Line Roller Washer	620.	44.	6-0609 31100S	Side Cover
18.	9.	7-0304 21100S	Line Roller	44.	45.	7-0725 05500S	Handle Lock Washer
332.	10.	7-0301 29120S	Rotor	101.	46.	7-0011 30200S	Side Cover Screw B
9.	11.	6-0309 26100S	Bail	45.	47.	7-0710 05100S	Handle Lock Screw
10.	12.	7-0338 24500S	Bail Trip Cover	46.	48.	7-0453 26100S	Handle Screw Cap
11.	13.	7-0335 26100S	Bail Trip Cam Screw	48.	49.	7-0404 26100S	Anti-Reverse Lever
12.	14.	7-0013 30110S	Cover Screw	49.	50.	7-0023 15300S	Lock Washer
13.	15.	7-0337 19300S	Lever Spring	50.	51.	7-0013 00100S	Anti-Reverse Lever Screw
14.	16.	7-0310 24500S	Bail Spring	53.	52.	7-0406 01100S	Anti-Reverse Cam Spring
15.	17.	7-0307 24500S	Bail Spring Cover	52.	53.	7-0424 26100S	Anti-Reverse Cam
16.	18.	7-0306 26100S	Bail Arm Screw	441.	54.	7-0112 26100S	Drag Shaft
21.	19.	7-0013 30091S	Line Roller Screw	55.	55.	7-0139 26100S	Drag Washer "C"
20.	20.	7-0316 21100S	Lock Washer	64.	56.	7-0113 26100S	Click Gear
19.	21.	7-0303 21000S	Bail Arm	56.	57.	7-0116 26100S	Eared Washer "B"
22.	22.	7-0336 24500S	Bail Trip Lever	57.	58.	7-0140 26100S	Drag Washer "D,"
23.	23.	7-0354 19300S	Trip Lever Spacer	65.	59.	7-0115 26100S	Key Washer "A"
24.	24.	7-0014 30210S	Trip Lever Screw	442.	60.	7-0145 26100S	Coned Disc Spring
26.	25.	7-0402 19300S	Bail Bearing	443.	61.	7-0119 26100S	Drag Coil Spring
27.	26.	7-0428 26100S	Pinion Spacer	444.	62.	7-0135 26100S	Drag Spring Washer "A"
28.	27.	7-0421 21000S	Anti-Reverse Ratchet	60.	63.	7-0136 26100S	Drag Spring Washer "B"
25.	28.	7-0522 21000S	Anti-Reverse Lock Out	445.	64.	7-0110 26100S	Pressure Screw
29.	29.	7-0011 30400S	Bearing Retainer Screw	446.	65.	7-0143 26100S	Stop Ring
619.	30.	6-0409 31100S	Body	621.	66.	7-0138 26101S	Drag Knob Click Spring
30.	31.	7-0407 26100S	Pinion Gear	622.	67.	6-0109 26101S	Drag Knob
31.	32.	7-0122 26100S	Drag Click	63.	68.	7-0134 26100S	Drag Knob Screw
32.	33.	7-0014 30100S	Multi Purpose Screw	67.	69.	6-0709 27100S	Handle Assembly
33.	34.	7-0427 26100S	Anti-Reverse Pawl	57A.	70.	7-0140 26110S	Drag Washer "D ₂ "
34.	35.	7-0422 21100S	Anti-Reverse Pawl Spring	448.	71.	7-0152 26100S	Drag Spring Washer "C"
35.	36.	7-0425 21100S	Anti-Reverse Pawl Screw				